

Economic Development Department, New Taipei City Government

Application Guidelines for the Third New Taipei Enterprise Classic Awards

Organizer: Economic Development Department, New Taipei City Government

Executing Entity: National Association of Small and Medium Enterprises, R.O.C.

Tel: (02) 2366-0812 ext. 282, (02) 2366-0812 ext. 263

Fax: (02) 2366-6259

Address: 6F., No. 95, Sec. 2, Roosevelt Road, Taipei City 106

Website: Economic Development Department, New Taipei City Government

(<https://www.economic.ntpc.gov.tw/>)

I. Background

To recognize enterprises in New Taipei City for their sound operations, enhancement of corporate value, strengthened competitiveness, and fulfillment of corporate social responsibility, the Economic Development Department of the New Taipei City Government (hereinafter referred to as the “Department”) has organized the New Taipei Enterprise Classic Awards since 2022. The award is held biennially and is guided by four core principles: "Courage to Innovate", "Global Vision", "Steady Sustainability", and "Cultivate Deeply in New Taipei." Through the selection mechanism, the program encourages enterprises to show diverse strengths and to shape exemplary industrial models for the city.

Building upon the concepts and spirit of the previous two editions, the Third New Taipei Enterprise Classic Awards aligns with trends in industrial sustainability and corporate management. It features a total of five categories across enterprise and individual awards, including four enterprise categories: Innovation & Investment, Diversified Services, Sustainability, and Global Excellence, as well as one individual category, Outstanding Women Leadership. By publicly recognizing outstanding enterprises and talents in the city, the program aims to foster corporate exchange and learning and to drive the continued upgrading and development of New Taipei City’s industries.

II. Organizer

Economic Development Department, New Taipei City Government

III. Executing Entity

National Association of Small and Medium Enterprises, R.O.C.

IV. Eligibility

- (I) Applicants must be enterprises that have legally completed company or business registration, with their registered address located in New Taipei City, or legally registered factories located in New Taipei City.
- (II) The enterprise must be in sound financial condition and have recorded pre-tax profits in at least two of the most recent four years (2022, 2023, 2024, 2025), with no accumulated losses as of the end of 2025. Enterprises whose operations have been significantly affected by U.S. tariffs are advised to submit supporting documentation explaining the extent of the impact and corresponding response measures.
- (III) The achievements submitted by the applicant must be related to New Taipei City.
- (IV) This award comprises enterprise categories and an individual category. Applicants for the individual category must additionally meet the following requirements:
 1. Female aged 20 or above.
 2. Have been employed by the company for at least two years.

3. Hold the position of the responsible person of the company, (co-)founder, director, supervisor, or department head. If the applicant does not hold any of the above positions, a declaration must be provided by the responsible person for certifying that the applicant has substantive decision-making authority in the company's operations.
- (V) Applicants shall be deemed ineligible if any of the following circumstances apply:
1. Within three years prior to the application deadline, the applicant has been involved in major labor disputes, major occupational accidents, major environmental pollution incidents or violations of the same provision of relevant laws and regulations administered by competent authorities, resulting in three or more penalties, or has been referred for and convicted by a final court judgment.
 2. Within one year prior to the application deadline, the applicant has been classified as a bank-rejected account or has records of dishonored checks.
 3. Enterprises that won awards in the first or second editions in each category (excluding Quality Potential Enterprise and Potential Enterprise awards) may not apply for the same award category in the current year, but may apply for other categories.
 4. Winners of the first New Taipei Outstanding Women Award and the second Outstanding Women Leadership Category may not apply for the Outstanding Women Leadership Category in the current year.

V. Application Categories

(I) Enterprise Categories (Each enterprise may apply for up to two categories.)

1. Innovation & Investment Category:

This category aims to encourage enterprises to strengthen technological innovation and R&D, demonstrating innovation and uniqueness in technologies or products to enhance industrial competitiveness. Meanwhile, enterprises are expected to continue investing in New Taipei City, expand their business scale, and place equal emphasis on corporate social responsibility and sustainable operations, thereby serving as exemplary models for other enterprises to learn from.

To encourage foreign investment, enterprises funded or invested in by foreign nationals may, upon recommendation by foreign institutions or foreign chambers of commerce in Taiwan listed on government websites, apply for this category. Each institution or

chamber of commerce may recommend up to three enterprises.

2. Diversified Services Category:

This category aims to encourage enterprises to demonstrate innovative models in specific business or service sectors, featuring characteristics that differentiate them from traditional services, and to leverage digital technologies and artificial intelligence to improve operational models and enhance customer experience. Applicant enterprises should possess well-developed service model strategies and strong competitiveness, making them exemplary references for industry peers.

3. Sustainable Development Category:

This category recognizes enterprises that place a strong emphasis on environmental protection and have taken concrete actions, such as promoting sustainable products, building a circular economy, reducing waste generation, or achieving outstanding results in implementing carbon reduction strategies, energy-saving plans, and energy creation initiatives. Such enterprises should serve as role models for advancing corporate sustainability.

4. Global Excellence Category:

This category aims to encourage enterprises to actively expand into international markets, promote overseas deployment, and enhance export competitiveness, thereby increasing the global visibility of Taiwanese products. Enterprises should demonstrate comprehensive internationalization strategies and performance, serving as exemplary models for international market expansion.

※ If applying for two categories, applicants must submit two separate sets of application forms. Should both categories advance to on-site evaluation, applicants must cooperate in undergoing two separate on-site evaluations, one for each category.

(II) Individual Category

● **Outstanding Women Leadership Category:**

This category recognizes female business leaders or department heads for their outstanding contributions to corporate management or improvements in departmental performance. It highlights the influence of women in the workplace and across industries, establishes positive workplace role models, and aims to cultivate momentum for the development of female management talent, thereby infusing corporate culture and business operations with greater diversity and vitality.

VI. Evaluation Criteria

(I) Enterprise Categories

1. Category-Specific Evaluation Criteria: 70%

| Category | Evaluation Criteria | | | Weight |
|---------------------------------------------|---------------------|--------------------------------------|------------------------------------------------------------------------------------------------------------------------------------------------------------------------------------------------------------------------------------------------------------------------------------------------------------------------------------------------------------------------------------------------------------------------------------------------------------------------------------------|--------|
| Innovation & Investment Category | 1 | Innovative R&D Capabilities | (1) The degree of innovation, uniqueness, and industrial competitiveness of technologies or products. (2) The proportion of R&D investment to revenue, as well as intellectual property management mechanisms and patent strategies. (3) Alignment with SDG 9: Building resilient infrastructure, promoting inclusive and sustainable industrialization, and fostering innovation. | 40% |
| | 2 | Investment and Growth | (1) Expansion of business scale, capital investment status, and future development plans and vision. (2) Growth rate of employee numbers and the development of market channels. (3) Investment in production process improvements and key industrial technologies to promote industrial upgrading. (4) Alignment with SDG 8: Decent work and economic growth. | 30% |
| Diversified Services Category | 1 | Innovative Service Capabilities | (1) Distinctive and differentiated service models and business operations. (2) Application of emerging digital transformation technologies to enhance service efficiency. | 40% |
| | 2 | Business Development Model | (1) Business models and channel development strategies and approaches. (2) An integrated, highly efficient operating system with unique core competitiveness. | 30% |
| Sustainable Development Category | 1 | Sustainable Management Strategy | (1) Green management ethos and strategic initiatives (such as implementing carbon footprint assessments and setting carbon reduction targets and pathways; adopting energy-saving equipment or measures; using environmentally friendly materials or simplified product packaging; and operational plans to reduce material consumption). (2) ESG practices, employee and consumer rights, and corporate image. (3) Alignment with SDG 12: Responsible consumption and production. | 40% |
| | 2 | Overall Carbon Reduction Performance | (1) Tangible results achieved in corporate carbon reduction. (2) Effective establishment of phased carbon reduction targets. (3) Implementation of carbon reduction measures, including improvements to production processes, energy transition initiatives, and investments in renewable energy. | 30% |

| Category | Evaluation Criteria | | | Weight |
|----------------------------|---------------------|--------------------------------|-----------------------------------------------------------------------------------------------------------------------------------------------------------------------------------------------------------------------------------------------|--------|
| Global Excellence Category | 1 | International Competitiveness | (1) Proportion of export revenue to the company's total revenue over the past three years. (2) Diversity of target markets. (3) International competitiveness of products or technologies and marketing strategies. | 40% |
| | 2 | Degree of Internationalization | (1) Planning and vision for international market deployment. (2) Status of overseas investments. (3) Alignment with SDG 17: Strengthening the means of implementation and revitalizing global partnerships for sustainable development. | 30% |

2. Common Evaluation Criteria: 30%

| Evaluation Criteria | | | Weight |
|---------------------|---------------------------------|---------------------------------------------------------------------------------------------------------------------------------------------------------------------------------------------------------------------------------------------------------------------------------------------------------------------------------------------------------------------------------------------------------------------------------------------------------------------------------------------------------------------------------------------------------------------------------------------------------------------------------------------------------------------------------------------------------------------------------------------------------------------------------------------------------------------------------------------------------------------------------------------------------------------------------------------------------------------------------------------------------------------------------------------------------------------------------------------------------------------------------------------------------------------------------------------------------------------------------------------------------------------------------------------------------------------------------------------------------------------------------------------------------------------------------------------------------------------------------------------------------------------------------|--------|
| 1 | Operations and Management | (1) Scale: Date of establishment, capital amount, operational overview, business scope, main products, and key customers. (2) Business Philosophy and Strategies. (3) Corporate Governance Practices. (4) Financial Planning Structure and Financial Projections. (5) Contributions to the Competitiveness of New Taipei City's Industries. | 15% |
| 2 | Corporate Social Responsibility | (1) Environmental Responsibility Contributions: The enterprise's response to government policies, such as green energy initiatives, sustainable materials management, energy conservation and carbon reduction, and the establishment of carbon management or sustainability departments. (2) Social Responsibility Contributions: The enterprise's involvement in social welfare initiatives, cultural sustainability, implementation of the Sustainable Development Goals (SDGs), and support for education and industry-academia collaboration. (3) Gender Diversity of the Board: At least one-third of the board of directors and supervisors is of the same gender. (4) Gender Equality Measures: Such as providing childcare facilities or appropriate childcare arrangements, childcare subsidies, lactation rooms, paid parental leave, encouragement of male employees to take childcare responsibilities, gender-friendly restrooms, inclusion of diverse gender groups, pay equity, and promotion of women to managerial positions. (5) Other Workplace-Friendly Measures: Inclusive workplaces for new immigrants, persons with disabilities, and middle-aged and senior workers; the proportion of employees with disabilities; caregiving support for elderly family members; Employee Assistance Programs (EAPs); work-family balance initiatives (such as flexible working hours or leave arrangements); employee grievance channels; and measures to uphold international human rights standards. | 15% |

3. Bonus Item:

| Bonus Item | | | Bonus Points |
|------------|------------------------|------------------------------------------------------------------------------------------------------------------------------------------------------------------------------|--------------|
| 1 | Corporate Headquarters | Enterprises with their headquarters established in New Taipei City (must have obtained a valid Headquarters Certification Letter issued by the Ministry of Economic Affairs) | 3 Points |

(II) Individual Category

| Category | Evaluation Criteria | | | Weight |
|----------------------------------------------|---------------------|----------------------------------------|-----------------------------------------------------------------------------------------------------------------------------------------------------------------------------------------------------------------------------------------------------------------------------------------------------------------------------------------------------------------------------------------------------------------------------------------------------------------------------------------------------------------------------------------------------------------------------------------------------------------------------------------------------------------------------------------------------------------------------------------------------------------------------------------------------------------------------------------------------------------------------------------------------------------------------------------------------------------------------------------------------------------------------------------------------------------------------------------|--------|
| Outstanding Women Leadership Category | 1 | Operations and Management | (1) Scale: Date of establishment, capital amount, operational overview, business scope, main products, and key customers. (2) Business Philosophy and Strategies. (3) Corporate Governance Practices. (4) Financial Planning Structure and Financial Projections. (5) Contributions to the Competitiveness of New Taipei City's Industries. | 10% |
| | 2 | Professional Management | (1) Effectively and accurately implementing corporate policies, achieving established work objectives, and enhancing corporate benefits and operational efficiency. (2) Formulating strategic plans and effectively integrating internal and external corporate resources to maximize overall benefits. | 35% |
| | 3 | Leadership Capabilities | (1) Adopting innovative or distinctive approaches that bring positive impacts or transformative changes to the department. (2) Demonstrating effective communication, team motivation, problem-solving abilities, and consensus-building within the organization. | 35% |
| | 4 | Corporate Social Responsibility | (1) Environmental Responsibility Initiatives: Promoting concrete actions in energy conservation and carbon reduction, green energy, the circular economy, and sustainable governance. (2) Social Responsibility and Public Welfare Engagement: Leading the enterprise's involvement in public welfare initiatives, cultural sustainability, the SDGs, and education or industry-academia collaboration. (3) Gender Equality and Corporate Governance: Promoting gender balance on the board of directors and supervisors (with no less than one-third representation of any one gender) and advancing equitable governance. (4) Workplace Equality and Diversity & Inclusion Measures: Advancing childcare and family-friendly policies, pay equity, development of female managers, and inclusion of diverse gender identities. (5) Inclusive Workplace and Human Rights Practices: Promoting policies friendly to new immigrants, persons with disabilities, and middle-aged and senior workers; implementing EAPs, flexible working hours, and human rights protections. | 20% |

VII. Required Documents (The following documents must be prepared in Chinese and submitted via the electronic application system.)

(I) Enterprise Categories

1. Eligibility Documents: The following documents must bear both the company seal and the responsible person's seal.

- (1) Proof of company or business registration, or proof of establishment in New Taipei City. (This may be substituted by printing the relevant information from the online business registration disclosure inquiry system of the Administration of Commerce, MOEA.)
- (2) A certificate of no outstanding tax liabilities or violations issued within the past three months by both the National Taxation Bureau and the local tax authority. (One copy each for national and local taxes.)
- (3) A certificate of no dishonored checks issued within the past three months by the Taiwan Clearing House or a financial institution. (Category I or Category II Credit Information Inquiry Application Form)^{Note 1}
- (4) Profit-Seeking Enterprise Income Tax Return for the most recent four years (2022, 2023, 2024, 2025), including the balance sheet, income statement, and tax calculation form.^{Note 2}
- (5) Notification on the Collection of Personal Data and Consent Form for the Provision of Personal Data: The responsible person of the company, the contact person for this application, and any natural persons whose personal data are involved in the application materials must all sign the consent form. (Annex 1)

Note 1: The Taiwan Clearing House website states that "credit inquiry data downloaded and printed from the online system is for reference only and may not be used as proof for other purposes." Therefore, please do not independently apply for credit certification through the official website.

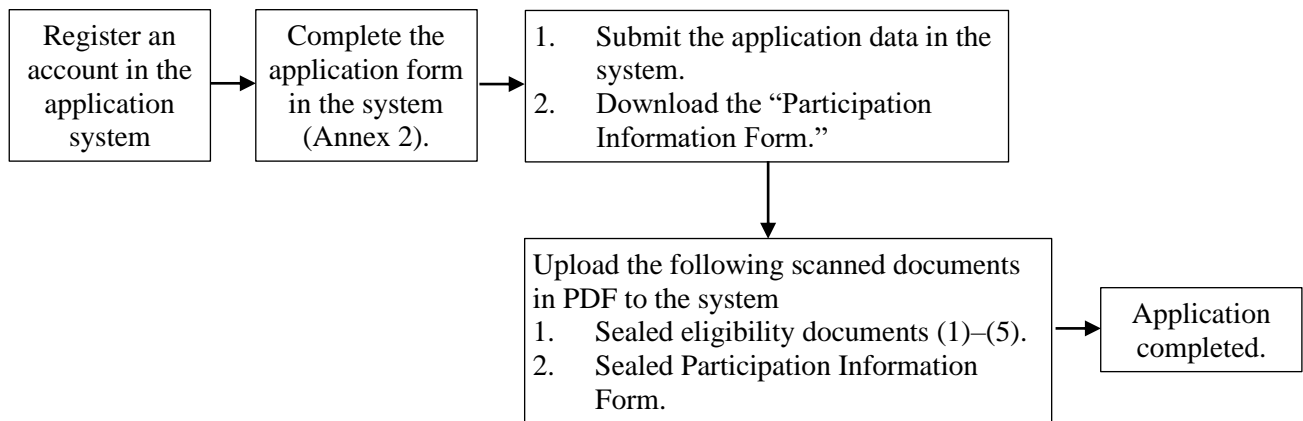
Note 2: For the 2025 Profit-Seeking Enterprise Income Tax Return, a provisional version or relevant supporting documents (such as the company's internal balance sheet and income statement) may be submitted for application purposes. The complete tax return shall be duly submitted and supplemented before the completion of the on-site review.

- 2. Application Form (see Annex 2):** During the application period, please log in to the online application system (URL: <https://ntceca.esc.org.tw/>) to complete the application form. After confirming submission, download and print the "Participation Information Form" from the system and affix the company seal and the responsible person's seal.
- 3. Uploading Eligibility Documents and Participation Information Form:** Please scan Eligibility Documents (A) through (E) of the above Item 1

and the duly sealed Participation Information Form into PDF files and upload them together to the electronic application system.

4. Enterprise Category Application Process Flow:

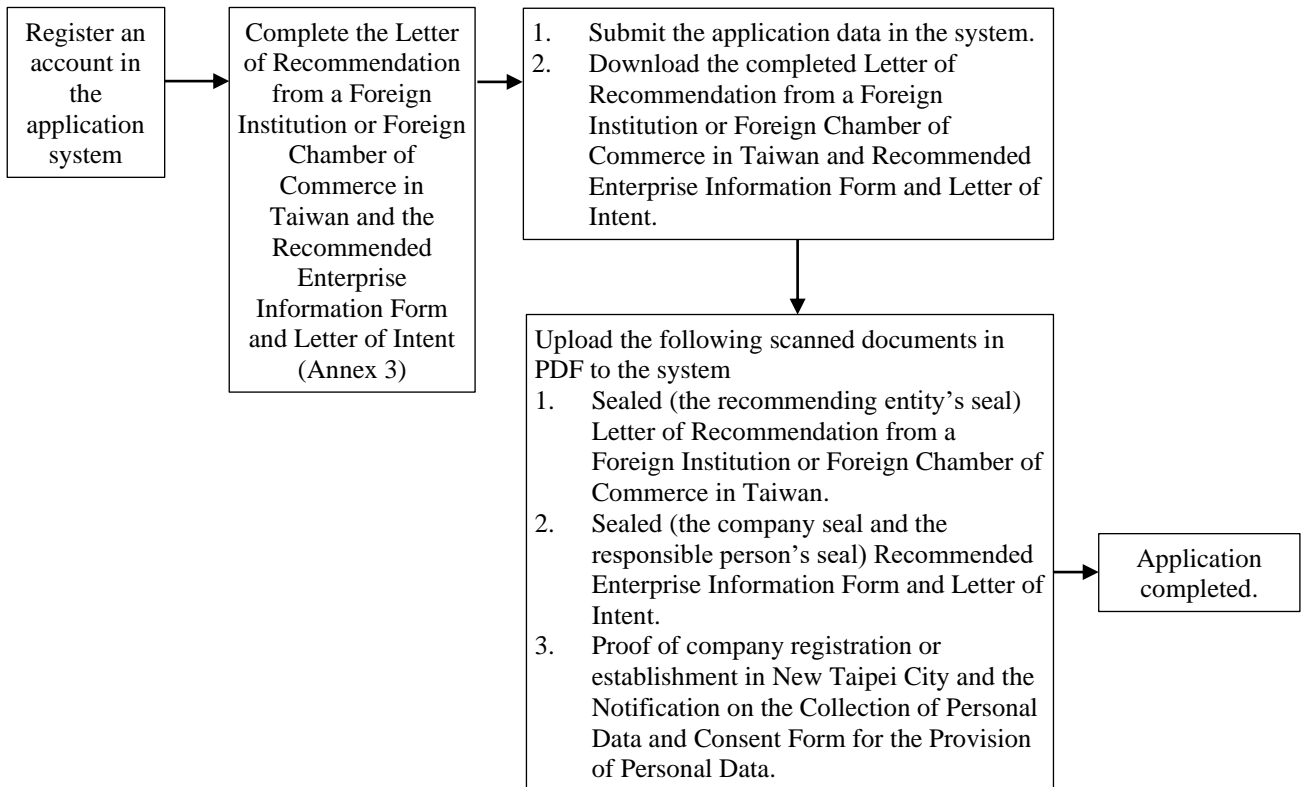
Enterprise Category Application Process



(II) Enterprise Category – Foreign Enterprises under the Innovation & Investment Category

1. Proof of Company Registration or Establishment in New Taipei City: One (1) copy. (This may be substituted by printing the relevant information from the online business registration disclosure inquiry system of the Administration of Commerce, MOEA.)
2. Notification on the Collection of Personal Data and Consent Form for the Provision of Personal Data: One (1) copy. The responsible person of the company, the contact person for this application, and any natural persons whose personal data are involved in the application materials must all sign the consent form. (Annex 1)
3. Letter of Recommendation from a Foreign Institution or Foreign Chamber of Commerce in Taiwan and the Recommended Enterprise Information Form and Letter of Intent: One (1) set (see Annex 3). During the application period, please log in to the online application system (URL: <https://ntceca.esc.org.tw/>) to complete the forms. After confirming submission, download and print the documents from the system. The Letter of Recommendation must bear the seal of the recommending entity, and the letter of intent must bear both the company seal and the responsible person's seal.
4. Uploading the Above Documents: Please scan Documents (1) to (3) above into PDF format and upload them to the electronic application system.
5. Application Process Flow for Foreign Enterprises under the Enterprise Category – Innovation & Investment:

Application Process for Foreign Enterprises under the Enterprise Category – Innovation & Investment



(III) Individual Category

1. Eligibility Documents: One (1) set. The following documents must bear both the company seal and the responsible person's seal.
 - (1) Proof of company or business registration, or proof of establishment in New Taipei City. (This may be substituted by printing the relevant information from the online business registration disclosure inquiry system of the Administration of Commerce, MOEA.)
 - (2) A certificate of no outstanding tax liabilities or violations issued within the past three months by both the National Taxation Bureau and the local tax authority. (One copy each for national and local taxes.)
 - (3) A certificate of no dishonored checks issued within the past three months by the Taiwan Clearing House or a financial institution. (Category I or Category II Credit Information Inquiry Application Form) ^{Note 1}
 - (4) Profit-Seeking Enterprise Income Tax Return for the most recent three years (2023, 2024, 2025), including the balance sheet, income statement, and tax calculation form. ^{Note 2}
 - (5) Notification on the Collection of Personal Data and Consent Form

for the Provision of Personal Data: The responsible person of the company, the contact person for this application, and any natural persons whose personal data are involved in the application materials must all sign the consent form. (Annex 1)

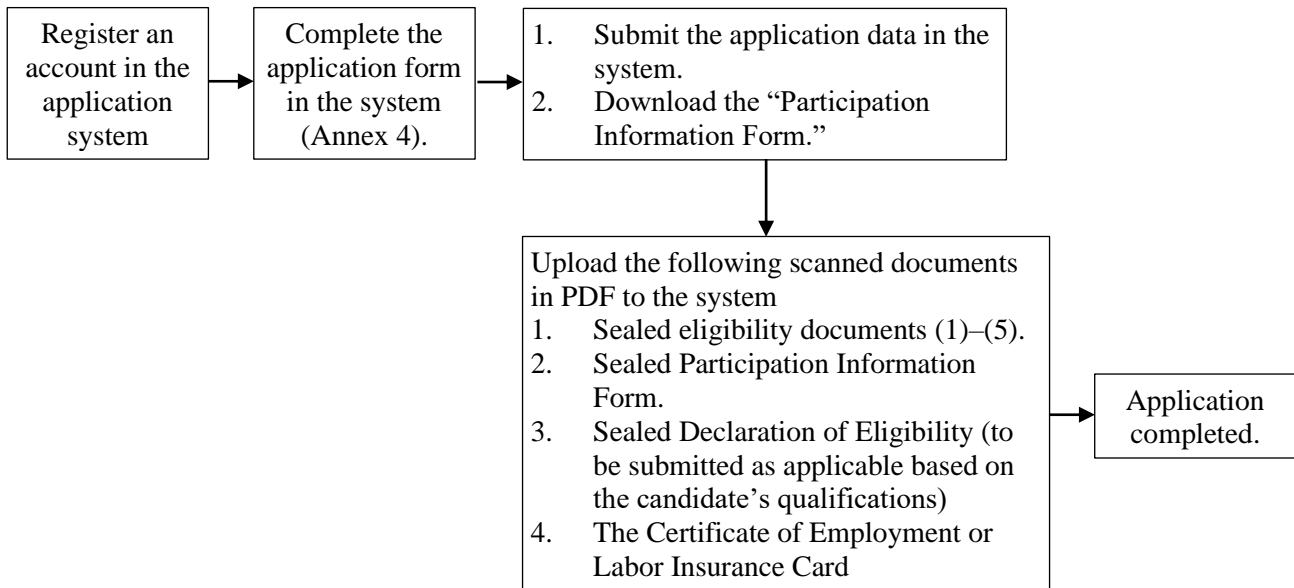
Note 1: The Taiwan Clearing House website states that “credit inquiry data downloaded and printed from the online system is for reference only and may not be used as proof for other purposes.” Therefore, please do not independently apply for credit certification through the official website.

Note 2: For the 2025 Profit-Seeking Enterprise Income Tax Return, a provisional version or relevant supporting documents (such as the company’s internal balance sheet and income statement) may be submitted for application purposes. The complete tax return shall be duly submitted and supplemented before the completion of the on-site review.

2. Application Form (see Annex 4): During the application period, please log in to the online application system (URL: <https://ntceca.esc.org.tw/>) to complete the application form. After confirming submission, download and print the “Participation Information Form” from the system and affix the company seal and the responsible person’s seal. If the candidate is not the responsible person of the company, co-founder, director/supervisor, or department head, the company must submit a Declaration of Eligibility.
3. One (1) Certificate of Employment or Labor Insurance Card.
4. Uploading Eligibility Documents, Participation Information Form, Declaration of Eligibility, and Certificate of Employment or Labor Insurance Card: Please scan the aforementioned eligibility documents (1)–(5), the duly sealed Participation Information Form, the Declaration of Eligibility, and the Certificate of Employment or Labor Insurance Card into PDF files and upload them together to the electronic application system.

5. Individual Category Application Process Flow:

Individual Category Application Process



- (IV) **Supplementary Submission of Application Materials:** After submission, only eligibility documents may be supplemented. Enterprises may not submit supplementary materials for the application form itself. If any eligibility documents are missing or incorrect, the applicant must make corrections within the specified notification period. Failure to do so by the deadline shall be deemed a voluntary withdrawal, and the application will not be processed.
- (V) **Return of Application Materials:** All materials submitted with the application will not be returned, regardless of whether the application is approved or withdrawn by the applicant.

VIII. Selection Procedures

(I) Selection Process

Both the Enterprise Categories and the Individual Category of this Award shall be conducted in two stages: Preliminary Review and Final Review.

1. Preliminary Review

(1) Document Review:

Scholars and experts with relevant expertise and representative standing will be invited to form a preliminary review panel to conduct a document-based evaluation. A review meeting will be convened to determine the enterprises or candidates eligible to proceed to the on-site review stage.

(2) On-site Review:

Members of the preliminary review panel will conduct on-site

visits to enterprises that have passed the document review (or to the organizations to which the candidates belong). A preliminary review meeting will then be convened to determine the shortlist of finalists for the final review.

2. Final Review

The final review panel will be composed of senior government officials, scholars and experts, and representatives from the industrial and commercial sectors. The panel shall conduct a comprehensive evaluation of the finalists’ submitted documents and the reports from the preliminary on-site reviews, and determine the final list of award recipients.

(II) Selection Timeline

| Selection Item | Schedule |
|---------------------------------------------------------|-----------------|
| Preliminary Review (Document Review and On-site Review) | May–July |
| Final Review | July–August |
| Award Ceremony | Early September |

※Note: The above dates are tentative and subject to adjustment based on the actual selection schedule.

IX. Number of Award Recipients

In principle, five (5) award recipients shall be selected for each category, for a total of twenty (20) enterprises and five (5) Outstanding Women Leaders. The actual number of award recipients shall be determined by the Selection Committee based on the review results. Subject to the development potential of the shortlisted enterprises, a “Potential Enterprise Award” may be additionally conferred.

X. Forms of Recognition and Incentives

- (I) Award recipients shall, in principle, be presented with the “New Taipei Enterprise Classic Awards” trophy and certificate by the head of the New Taipei City Government. The City Government’s official channels shall concurrently release highlights and congratulatory posts, and a promotional video shall be produced and demonstrated at the award ceremony and on online platforms to enhance brand recognition.
- (II) Award-winning enterprises’ achievements shall be promoted through media coverage to highlight their contributions to New Taipei City and enhance public visibility. The City Government shall also assist in referrals to well-known business platforms to help expand market channels.
- (III) Award-winning enterprises shall be given priority access to enterprise

counseling teams, providing guidance on human resources management, business operations and management, job redesign needs, and work–life balance measures to support employee retention.

- (IV) Award-winning enterprises may be prioritized for single-employer recruitment events coordinated by the Employment Service Office to facilitate rapid talent matching.
- (V) For award-winning enterprises, the Department of Labor shall not proactively conduct labor inspections. However, this does not apply to cases involving labor complaints, matters of public concern, occupational accidents, or other cases designated by central competent authorities for investigation.
- (VI) To promote exchange among past award recipients, a “New Taipei Enterprise Classic Awards Alumni Association” shall be established to organize enterprise networking events and industry trend-sharing activities on an ad-hoc basis. The Department shall promptly share relevant municipal and central government support resources.
- (VII) Award-winning enterprises may apply directly to the Small & Medium Enterprise Credit Guarantee Fund of Taiwan (TSMEG) under the National Development Preferential Guarantee Measures for financing of up to NTD 100 million, with a maximum guarantee coverage of 95%.
- (VIII) Award-winning enterprises shall be given priority for recommendations to participate in domestic and international exhibitions and trade fairs to facilitate business expansion.
- (IX) Award-winning enterprises may be recommended by the Department to participate in the selection of relevant central government awards (such as the Rising Star Award and the National Award of Outstanding SMEs (Rock Award)).

XI. Submission Method and Application Period

Applications shall be accepted from the date of public announcement until Wednesday, April 8, 2026. Upon completion of all required application materials, applicants shall upload the documents to the New Taipei Enterprise Classic Awards Online Application System (URL: <https://ntceca.esc.org.tw/>).

XII. Contact Information

New Taipei Enterprise Classic Awards Working Group, Ms. Lee

Tel: (02)2366-0812#263

E-Mail: silvia_lee@nasm.org.tw

Fax: (02)2368-6259

XIII. Obligations of Award-Winning Enterprises

- (I) All enterprises applying for the Award shall cooperate with the

organizer's arrangements for evaluation, selection, and award presentation activities.

- (II) Award-winning enterprises shall comply with the organizer's regulations and shall not publicly disclose any related information prior to the official announcement of the award recipients.
- (III) Award-winning enterprises are obligated to cooperate with follow-up activities related to the Award, participate in program-related events, and assist the government in the collection and preparation of relevant promotional materials.
- (IV) If an award-winning enterprise is verified to have violated the provisions of these Guidelines, made false statements, or committed serious violations of environmental protection, labor, or occupational safety and health regulations, or if other disputes arise that materially affect public interest or the credibility of this Award, the organizer may revoke the award qualification. In such cases, the award trophy and certificate shall be returned, and the enterprise shall bear any corresponding legal liability.

XIV. Annexes

Annex 1: Personal Data Collection Notice and Consent Form

Annex 2: Application Form – Enterprise Categories for the Third New Taipei Enterprise Classic Awards

Annex 3: Letter of Recommendation from a Foreign Institution or a Foreign Chamber of Commerce in Taiwan

Annex 4: Application Form – Individual Category (Outstanding Women Leadership Category) for the Third New Taipei Enterprise Classic Awards